

Musical MIDI Accompaniment

MMA

Chord Reference Manual

This document was prepared from version 19.08b of MMA.

Bob van der Poel
Wynndel, BC, Canada

bob@mellowood.ca

January 20, 2020

Chapter 1

Chord Reference

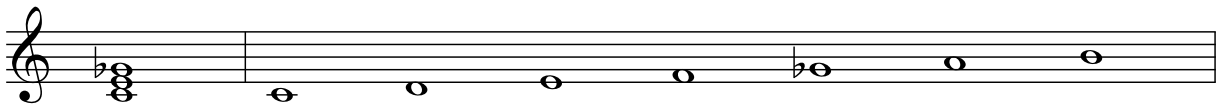
This document is a reference to the chords and scales use in *MtA*. It has been generated directly from the module `chordtable.py` in the *MtA* sources. Each section shows the chord name, a brief description, the chord notes for a “C” chord, and the associated scale tones. These chords and scales are used in *MtA* to generate chords, bass, arpeggios, arias, harmonies and scales.

In all cases you will need to preface the name with a chord pitch. For example, the reference for an 11th chord is listed simply as “11”; you would use a “C11” or “Eb11”, etc. in your *MtA* source file. Read the *MtA* Reference Guide if you don’t understand this.

This document was prepared as a reference to verify the correctness of the chords and scales used in *MtA*. If you find an error, please let the author know.

MtA defines 98 unique chords plus 62 aliases. Chords used in *MtA* via aliased names are listed after the main name.

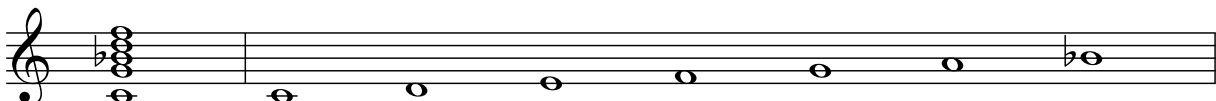
(b5) — Major triad with flat 5th. MMA notation requires the () around the name.



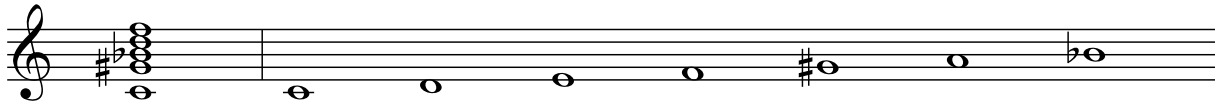
+7b9#11 — Augmented 7th with flat 9th and sharp 11th.



11 — 9th chord plus 11th (3rd not voiced).



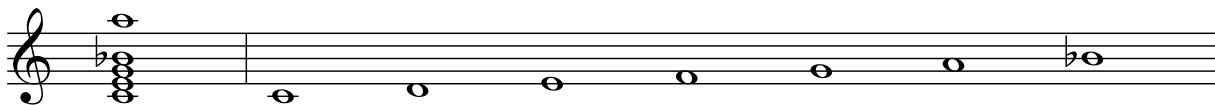
11+, **11#5** — Augmented 11th (sharp 5).



11b9 — 7th chord plus flat 9th and 11th.



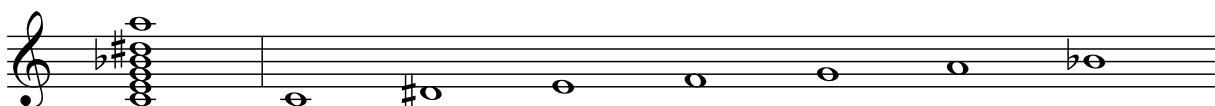
13 — 7th (including 5th) plus 13th (the 9th and 11th are not voiced).



13#11 — 7th plus sharp 11th and 13th (9th not voiced).



13#9 — 7th (including 5th) plus 13th and sharp 9th (11th not voiced).



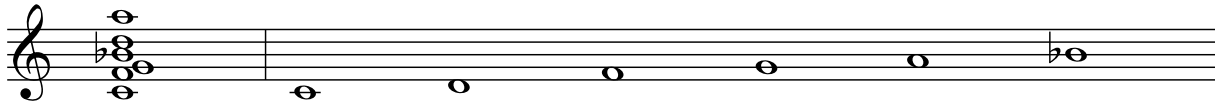
13b5 — 7th with flat 5th, plus 13th (the 9th and 11th are not voiced).



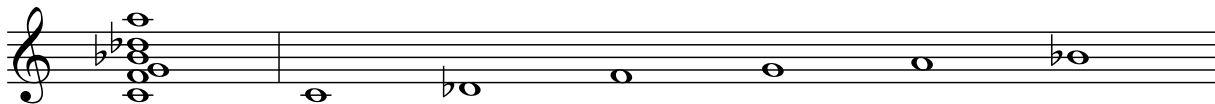
13b9, **M7(add13)** — 7th (including 5th) plus 13th and flat 9th (11th not voiced).



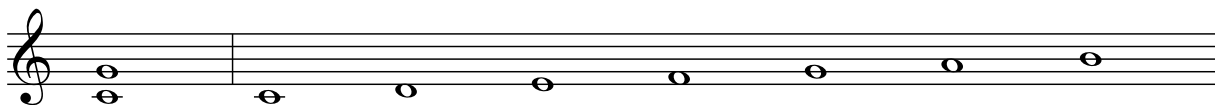
13sus, 13sus4 — 7sus, plus 9th and 13th



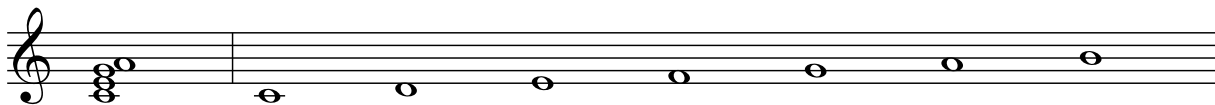
13susb9 — 7sus, plus flat 9th and 13th



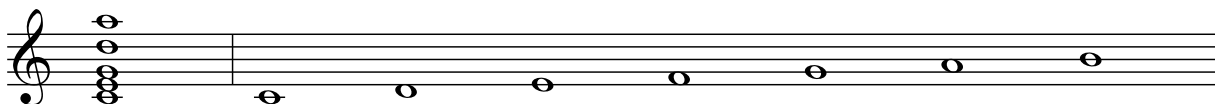
5 — Altered Fifth or Power Chord; root and 5th only.



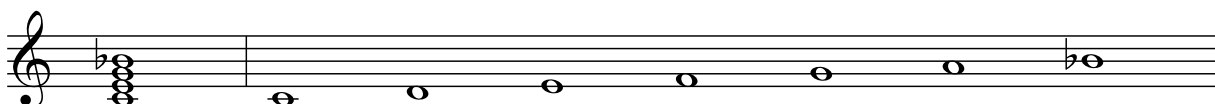
6, M6 — Major triad with added 6th.



6(add9), 69 — 6th with added 9th. This is sometimes notated as a slash chord in the form “6/9”. MMA voices the 6th an octave higher.



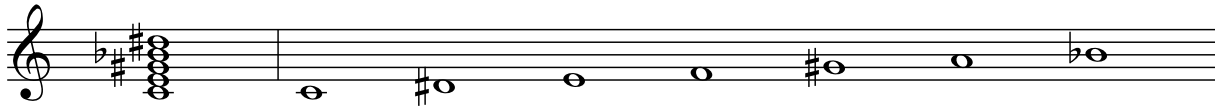
7 — 7th.



7[#]11 — 7th plus sharp 11th (9th omitted).



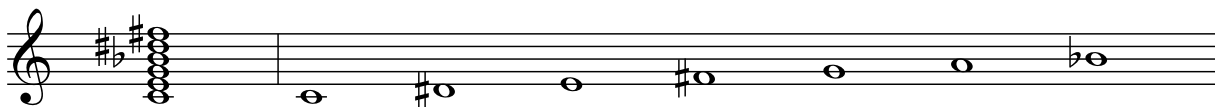
7[#]5[#]9 — 7th with sharp 5th and sharp 9th.



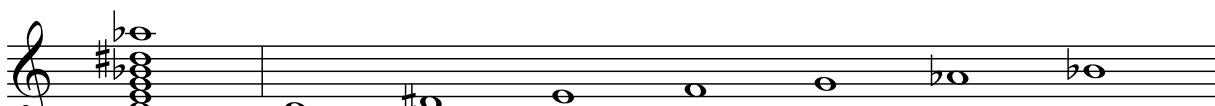
7[#]9, 7+9 — 7th with sharp 9th.



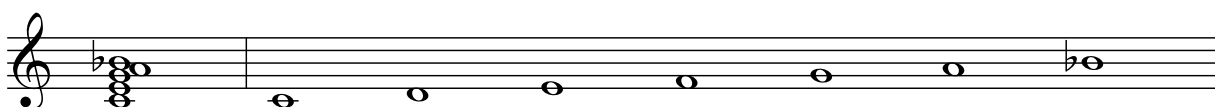
7[#]9[#]11 — 7th plus sharp 9th and sharp 11th.



7[#]9^b13 — 7th with sharp 9th and flat 13th.



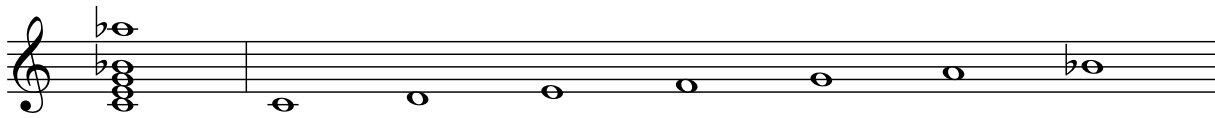
7(6) — 7th with added 6th.



7(add13) — 7th with added 13th.



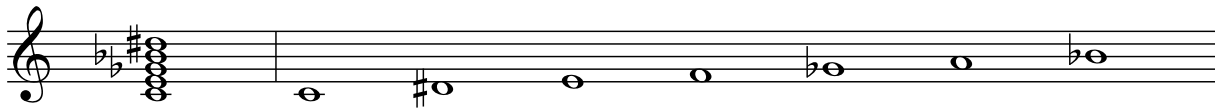
7^b13 — 7th (including 5th) plus flat 13th (the 9th and 11th are not voiced).



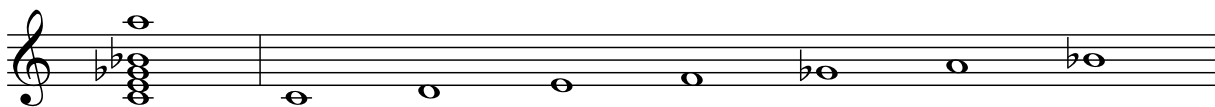
7^b5, 7-5 — 7th, flat 5.



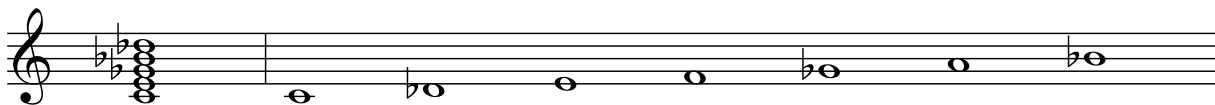
7^b5[#]9 — 7th with flat 5th and sharp 9th.



7^b5(add13) — 7th with flat 5 and 13th.



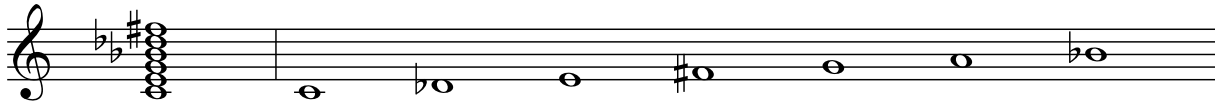
7^b5^b9, 7alt — 7th with flat 5th and flat 9th.



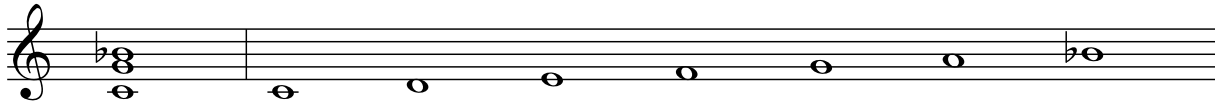
7^b9, 7-9 — 7th with flat 9th.



7^b9[#]11 — 7th plus flat 9th and sharp 11th.



7omit3, 7(omit3) — 7th with unvoiced 3rd.



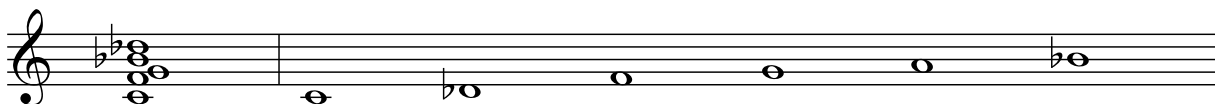
7sus, 7sus4 — 7th with suspended 4th, dominant 7th with 3rd raised half tone.



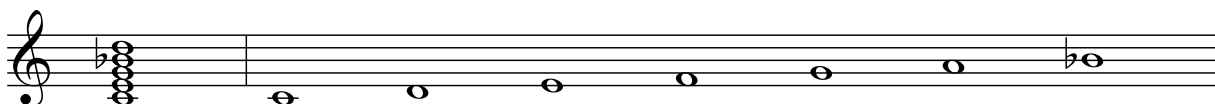
7sus2 — A sus2 with dominant 7th added.



7sus^b9, 7^b9sus — 7th with suspended 4th and flat 9th.



9 — 7th plus 9th.



9[#]11 — 7th plus 9th and sharp 11th.



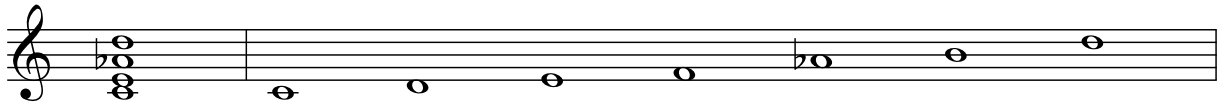
9#5, aug9, 9+, +9, 9+5 — 7th plus 9th with sharp 5th (same as aug9).



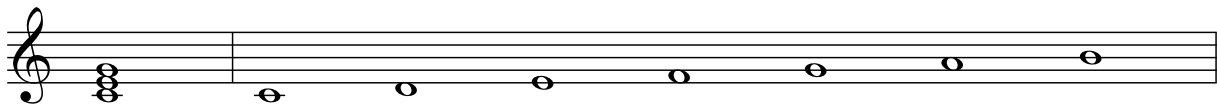
9b5, 9-5 — 7th plus 9th with flat 5th.



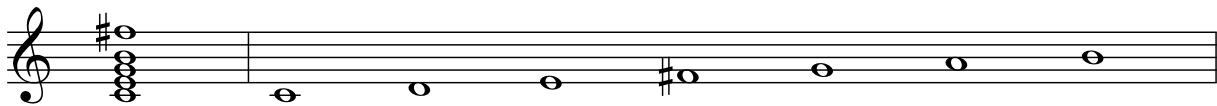
9b6 — 9th with flat 6 (no 5th or 7th).



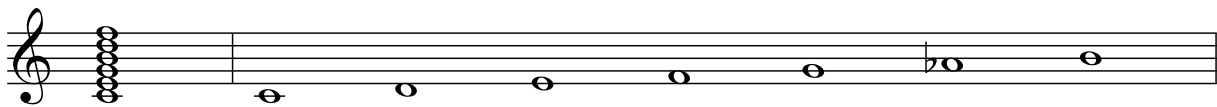
M — Major triad. This is the default and is used in the absence of any other chord type specification.



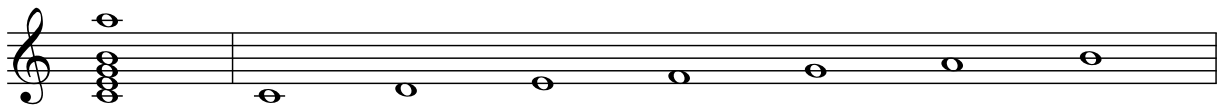
M#11 — Major triad plus sharp 11th.



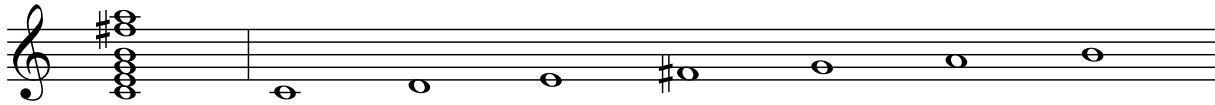
M11 — Major 9th plus 11th.



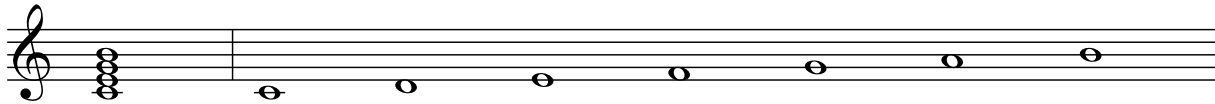
M13, maj13 — Major 7th (including 5th) plus 13th (9th and 11th not voiced).



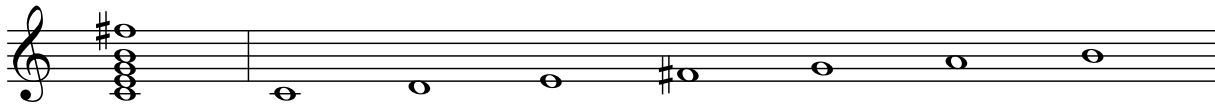
M13#11 — Major 7th plus sharp 11th and 13th (9th not voiced).



M7, maj7 — Major 7th.



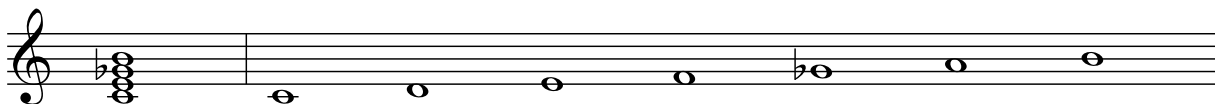
M7#11 — Major 7th plus sharp 11th (9th omitted).



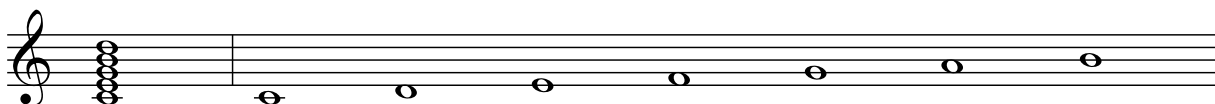
M7#5, +M7, M7+5 — Major 7th with sharp 5th.



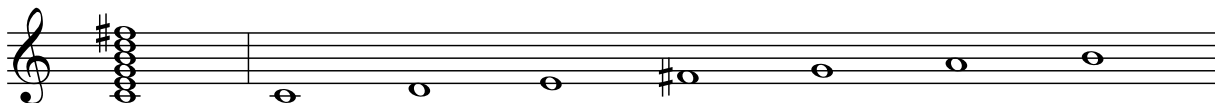
M7b5, M7-5 — Major 7th with a flat 5th.



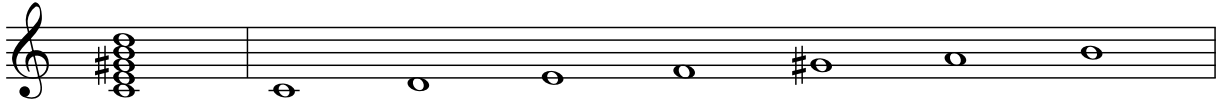
M9, maj9 — Major 7th plus 9th.



M9#11 — Major 9th plus sharp 11th.



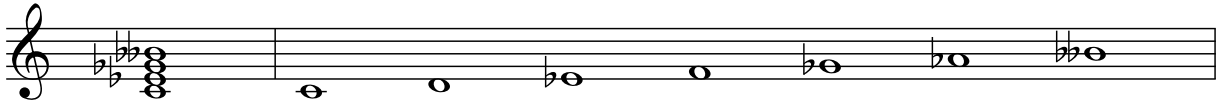
aug9M7, +9M7 — An augmented chord (raised 5th) with a major 7th and 9th.



dim(b13) — Diminished seventh, added flat 13th.



dim7, dim, ° — Diminished seventh.



dim7(addM7), °(addM7) — Diminished triad with added Major 7th.



m — Minor triad.



m#5, m+5, m+ — Minor triad with augmented 5th.



m(sus9), m(add9) — Minor triad plus 9th (no 7th).



m+7#9 — Augmented minor 7 plus sharp 9th.



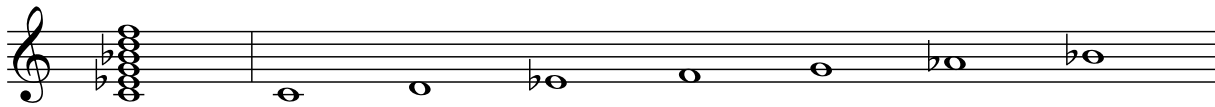
m+7b9 — Augmented minor 7 plus flat 9th.



m+7b9#11 — Augmented minor 7th with flat 9th and sharp 11th.



m11 — 9th with minor 3rd, plus 11th.



m11b5 — Minor 7th with flat 5th plus 11th.



m13 — Minor 7th (including 5th) plus 13th (9th and 11th not voiced).



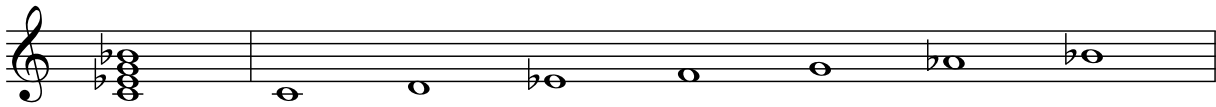
m6 — Minor 6th (flat 3rd plus a 6th).



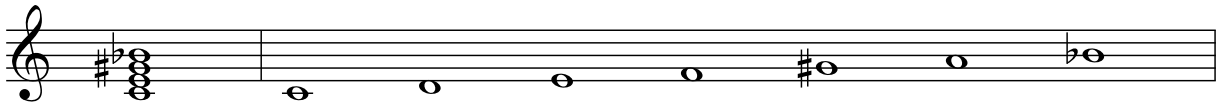
m6(add9), m69 — Minor 6th with added 9th. This is sometimes notated as a slash chord in the form “m6/9”.



m7 — Minor 7th (flat 3rd plus dominant 7th).



m7#5 — Minor 7th with sharp 5th.



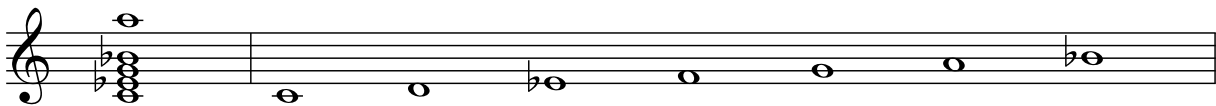
m7#9, m7(#9) — Minor 7th with added sharp 9th.



m7(add11) — Minor 7th plus 11th.



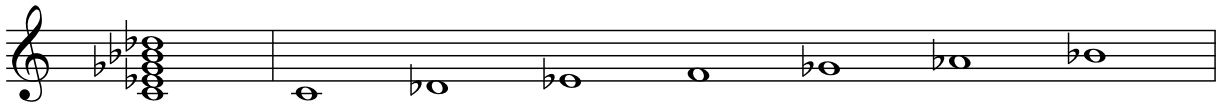
m7(add13) — Minor 7th plus 13th.



m7^b5, m7-5, ø — Minor 7th, flat 5 (aka 1/2 diminished).



m7^b5^b9 — Minor 7th with flat 5th and flat 9th.



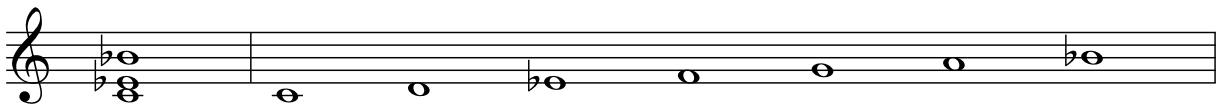
m7^b9, m7(b9) — Minor 7th with added flat 9th.



m7^b9[#]11 — Minor 7th plus flat 9th and sharp 11th.



m7omit5, m7(omit5) — Minor 7th with unvoiced 5th.



m7sus4, m7sus — Minor suspended 4th, minor triad plus 4th and dominant 7th.



m9 — Minor triad plus 7th and 9th.



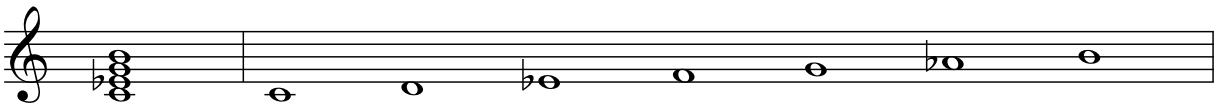
m9#11 — Minor 7th plus 9th and sharp 11th.



m9b5 — Minor triad, flat 5, plus 7th and 9th.



mM7, m(maj7), m+7, min(maj7), min#7, m#7 — Minor Triad plus Major 7th. You will also see this printed as “m(maj7)”, “m+7”, “min(maj7)” and “min#7” (which *MuA* accepts); as well as the *MuA* invalid forms: “-(Δ7)”, and “min♭7”.



mM7(add9) — Minor Triad plus Major 7th and 9th.



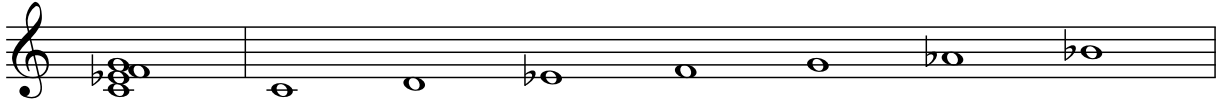
m^b5, m(b5), °3, dim3 — Minor triad with flat 5th (aka dim).



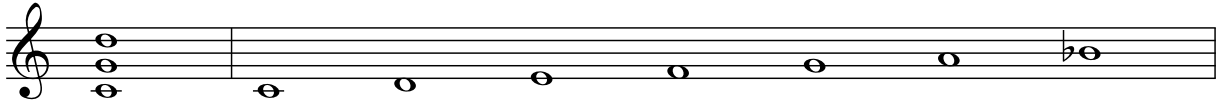
mb9 — Minor chord plus flat 9th (no 7th.)



msus4, msus — Minor suspended 4th, minor triad plus 4th.



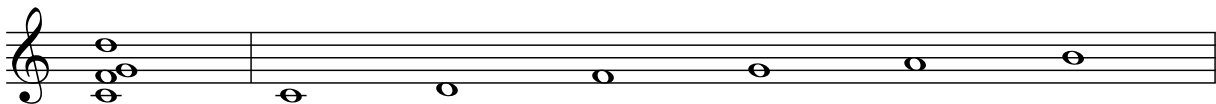
omit3add9, omit3(add9) — Triad: root, 5th and 9th.



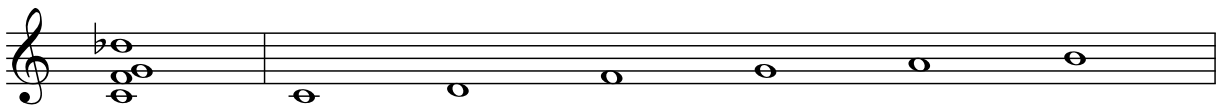
sus(add#9) — Suspended 4th, major triad with the 3rd raised half tone plus sharp 9th.



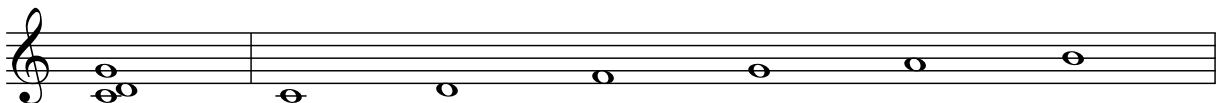
sus(add9) — Suspended 4th, major triad with the 3rd raised half tone plus 9th.



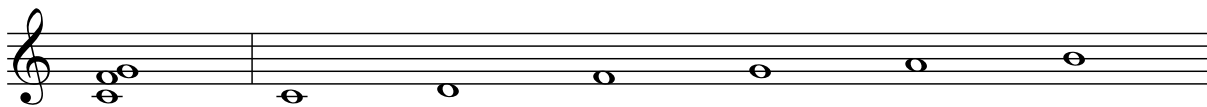
sus(addb9) — Suspended 4th, major triad with the 3rd raised half tone plus flat 9th.



sus2 — Suspended 2nd, major triad with the major 2nd above the root substituted for 3rd.



sus4, sus — Suspended 4th, major triad with the 3rd raised half tone.



sus9, 9sus, 9sus4 — 7sus plus 9th.



Appendix A

Index of Chords